

Town Hall:

Coalition Structure Evolving in 2026



**CARBON CAPTURE
COALITION**

Today's Agenda

Historical context on the Carbon Capture Coalition

- How it is organized, the operating budget, and its model
- Preserving the consensus model

Launching Carbon Capture Impact

- Rationale
- Operations

Launching Impact's Advisory Council

Evolution of funding model and budget

Impact dues Structure, Impact timeline & next steps

Discussion

About the Carbon Capture Coalition

Vision

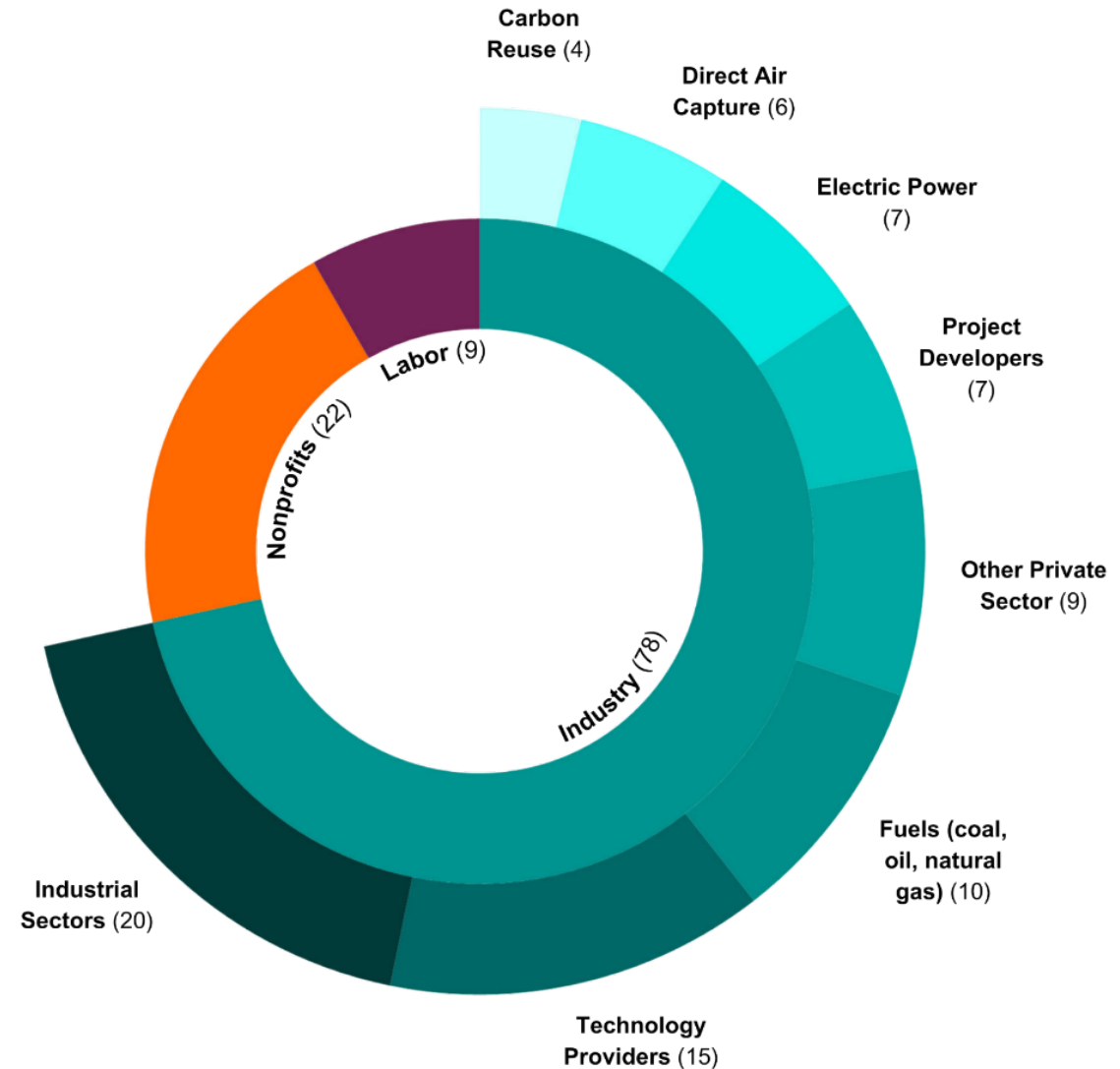
Carbon management technologies are a widely deployed emissions abatement strategy.

Mission

Build broad federal policy support for the nationwide deployment of carbon management technologies.

How We Operate

The Coalition achieves maximum impact by grounding our decision-making process in consensus, where our 100+ members across companies, labor unions, and conservation and environmental organizations weigh in on and ultimately agree on the Coalition's top priorities.



To learn more and view our complete membership list, visit www.carboncapturecoalition.org

A Decisive Role in Advancing Carbon Management Policies for Over a Decade

Legislative

- **45Q: 2018 restructuring of tax credit, 2022 enhancements, 2025 preservation**
- The Utilizing Significant Emissions with Innovative Technologies Act (USE IT)
- \$12 billion for carbon management technologies in the Infrastructure Investments and Jobs Act
- Annual appropriations for carbon management at DOE, Class VI wells

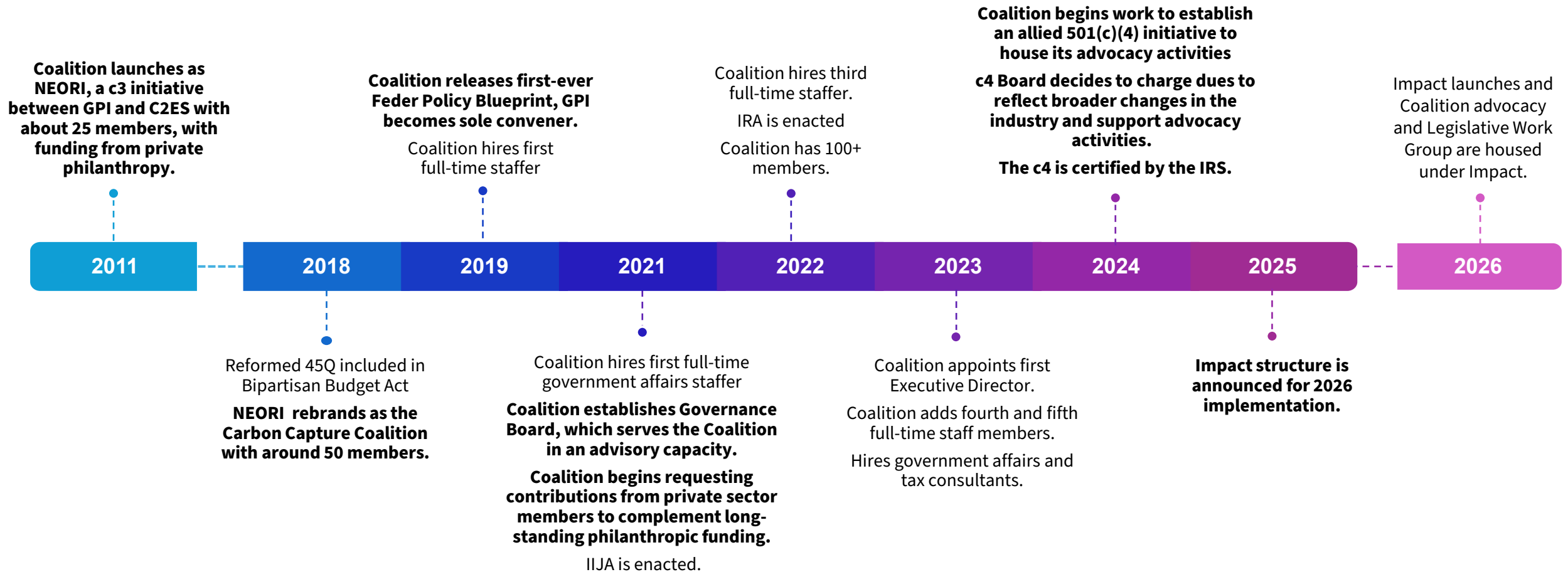
Tax, Regulatory & Implementation

- **2021 guidance from Treasury on 45Q**
- EPA Greenhouse Gas Reporting Program
- Continued implementation of the most recent enhancements to the 45Q tax credit & regulatory framework
- DOE implementation of federal funding

Communications

- **Driving national and trade press coverage of carbon management**
- Facilitating Coalition member communications with reporters
- Media briefings, Congressional education and stakeholder engagement

Evolution of the Coalition



The Coalition's Model for Success



Members engage in Work Groups to drive forward Coalition positions across policy development, implementation, and communications.



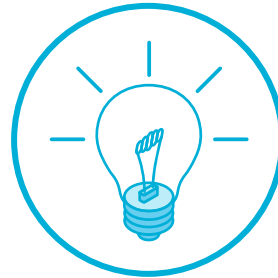
The Coalition operates on a **consensus-model**



Members can participate in any **Coalition Work Group** and must participate in at least one Work Group.



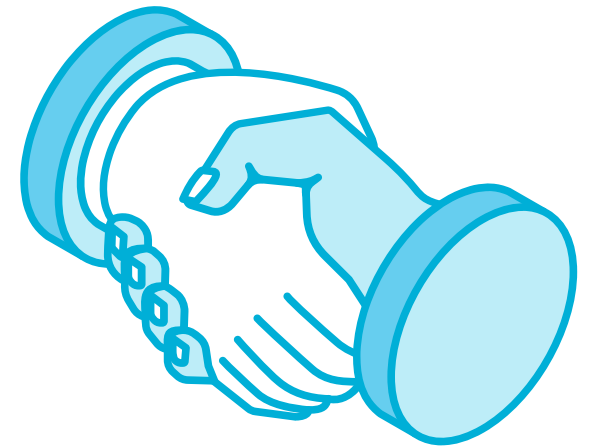
The Coalition's **Federal Policy Blueprint** serves as its roadmap, outlining an ambitious agenda for nationwide deployment.



Members can **formally propose issues** for consideration by Work Groups.

The Coalition Consensus Model

- Consensus is sought by **general consent** rather than a formal voting process.
- Consensus is understood to mean that individual participant organizations are **generally comfortable** with Coalition positions.
- It does **not mean** that each issue that the Coalition works on is a top priority for each organization.
- Consensus means that no member will **actively work against** or oppose an established consensus position.



The Coalition will continue to house our...



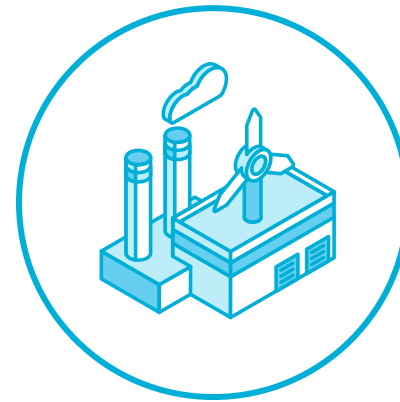
**Blueprint
Work Group**



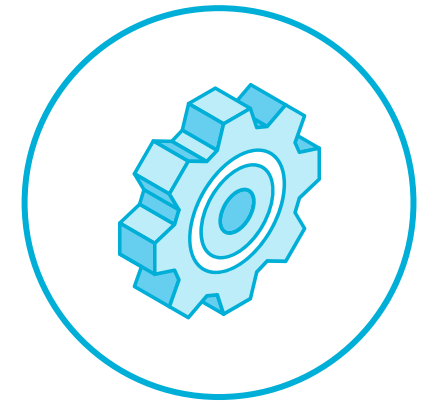
**Regulatory &
Guidance Work
Group**



**Communications
Work Group**



**Implementation
Work Group**



**Other technical
or ad-hoc Work
Groups**

Carbon Capture Impact - Rationale

- As a 501(c)(3) organization, the Carbon Capture Coalition is limited in the types and amounts of advocacy activities it may engage in.
- Establishing an affiliated (c)(4) organization is a step that many (c)(3) organizations pursue to:
 - Provide a bright line between permissible advocacy and nonprofit activities.
 - Allow for unrestricted amounts of advocacy.
 - Provide greater clarity to funders and members.



**CARBON CAPTURE
IMPACT**

Carbon Capture Impact - Operations

CARBON CAPTURE COALITION

- Works with members to set the Coalition's policy agenda.
- Responds to technical queries (requests for information, comments on regulatory dockets, etc.).
- Communicates to carbon management stakeholders, including allied organizations and members of the media.
- Manage signature events including the Coalition's annual meeting, media briefings and others.

CARBON CAPTURE IMPACT

- Advocates for the enactment and implementation of Impact's legislative and regulatory priorities.
- Responding to legislative topics, including statements for the record, appropriations, etc.
- Communicating advocacy priorities to lawmakers, the media, and broader stakeholders.
- Organizing advocacy events, including Impact's annual Hill Day.
- Impact does not endorse or oppose political candidates.

- Vision
- Policy priorities
- Members
- Staff

Carbon Capture Impact – Next Steps

- Impact will officially launch in January 2026.
- Relevant staff and consultants will register under the lobbying disclosures act for Carbon Capture Impact.
- Beginning in 2026, Impact will take ownership of the Legislative Work Group and advocate for high-impact legislation with Members of Congress and the administration.



**CARBON CAPTURE
IMPACT**

Governance & Impact Board Members:

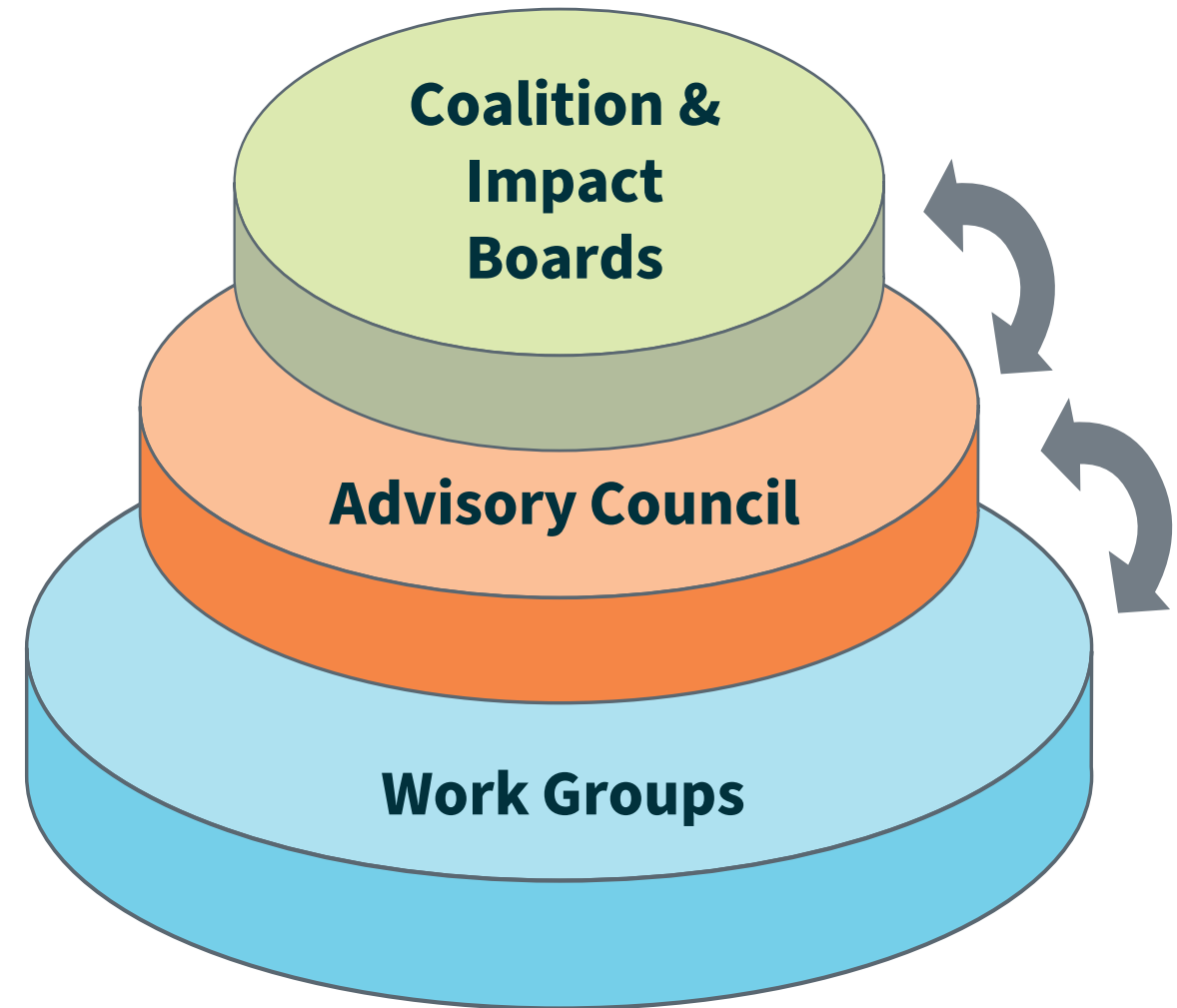
- Non-profits
- Labor organizations
- Corporations

Advisory Council Members:

- Non-profits (no more than 2)
- Labor organizations (no more than 2)
- Startups (no more than 1)
- Small companies and trade associations (no more than 1)
- Mid-size companies (contributing to dues)
- Large companies (contributing to dues)

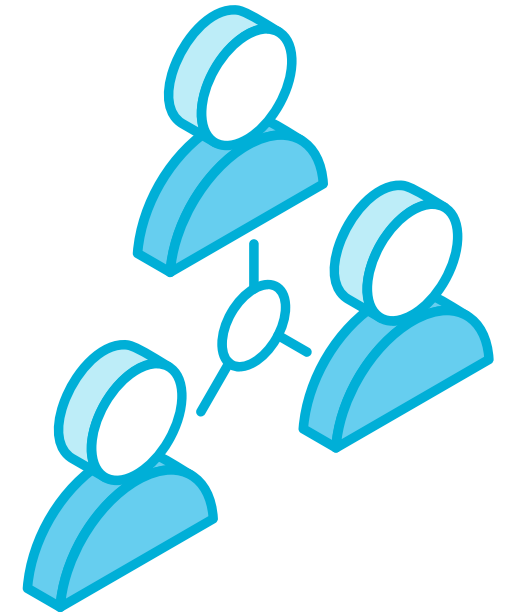
Work Groups:

- Coalition & Impact members



Impact's Advisory Council

- The Advisory Council provides strategic input on Impact & Coalition priorities while preserving the consensus model.
- Composed of representatives from member organizations with expertise in carbon management and a commitment to Coalition & Impact success.
- Meets at least three times annually to advise on policy, communications, advocacy, fundraising, and event strategy.
- Will offer opportunities for leadership, strategic engagement, and cross-sector networking.
- Impact will formally convene in January – date TBD.



Recap: Impact versus Coalition membership

Membership:

- Impact welcomes and encourages members of the Carbon Capture Coalition to join and drive forward the necessary legislative agenda for carbon management technologies.
- If you want to continue to engage in our Legislative Work Group, you must be an Impact member.
- All other activities and work groups will continue to be housed in the Coalition.

Dues:

- Dues from for-profit and trade association Impact members will be directed toward Impact, the (c)(4), and funding our advocacy activities.
- Nonprofit and labor unions will not be subject to dues.

External communications:

- Coalition members will be listed on the new Coalition website.
- Impact members will *not* be listed on the new Impact website.

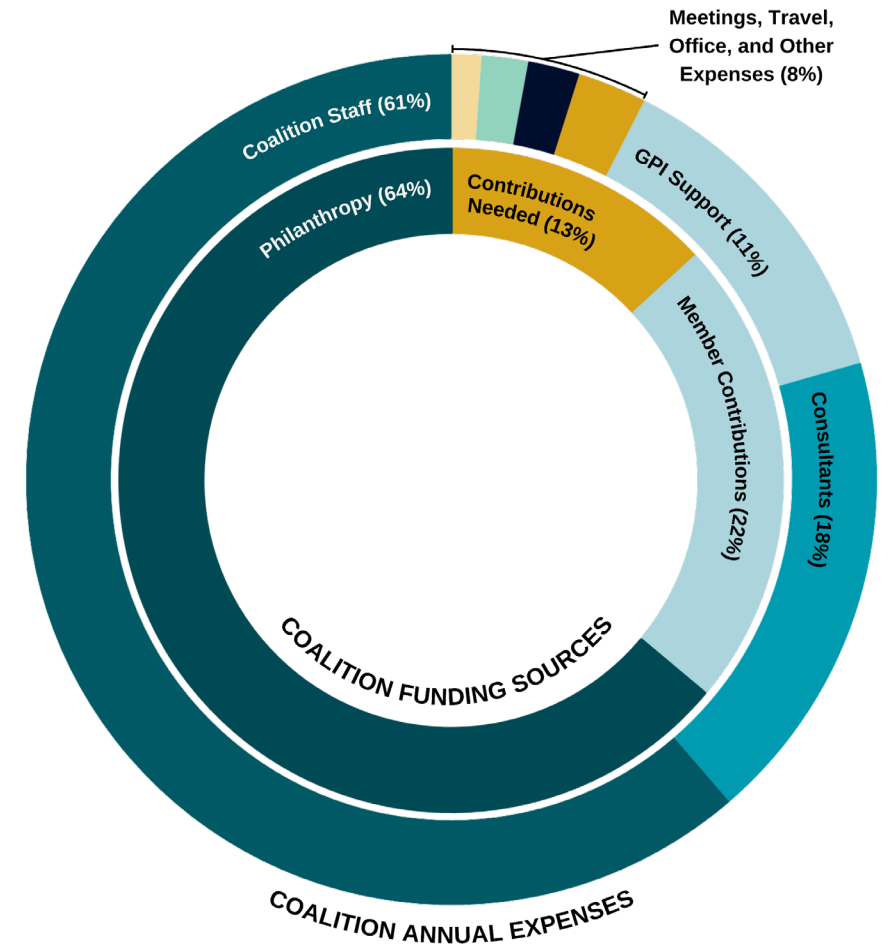
Evolution of Coalition Funding Model

- **2011 – today:** The majority of the Coalition’s operating budget is provided by private philanthropy.
- **2021:** Coalition begins soliciting companies and trade associations to voluntarily contribute to the Coalition’s operating budget.
- **2022:** Coalition staff and the Great Plains Institute begin work to establish an allied effort, Carbon Capture Impact, to house Coalition advocacy activities.
- **2024:** The transition to a dues model is announced to the membership.
- **2025:** The launch of Impact is announced. For calendar year 2026, dues will be collected under Impact to fund its operating budget.



Carbon Capture Impact - Budget

- Impact and Coalition will operate as separate, but affiliated organizations in compliance with laws overseeing permissible activities of 501(c)(3) and 501(c)(4) organizations.
- Impact and Coalition will share staffing and resources through a cost-sharing agreement.
- **Dues are not collected under the Carbon Capture Coalition.**
- **Dues will be collected and directed toward the activities of Carbon Capture Impact.**



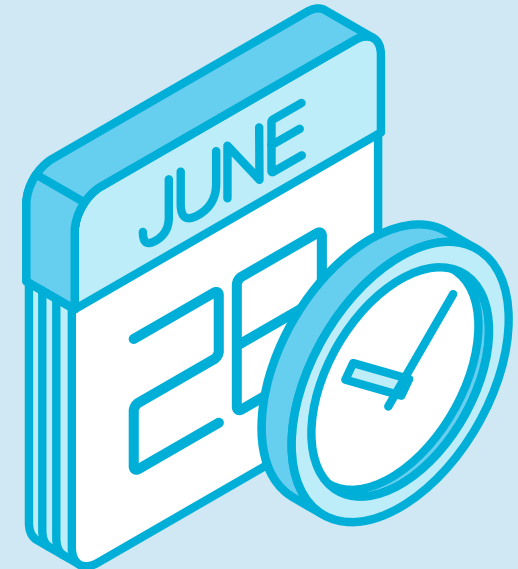
Impact Budget 2026 Dues Structure

- Impact’s budget will be comprised of dues from for-profit and trade association members of Impact. Non-profit and labor unions of Impact will not pay dues. **Contributions to the 501(c)4 are not tax-deductible.**
- Dues are collected annually and are based on the calendar year.
- Carbon Capture Impact’s Board sets dues levels.

Effective 2026	Non-profit & labor organizations	Startups (50 employees or less)	Startups (Greater than 50 employees)	Small companies	Industry trade associations	Mid-size companies	Large companies
Annual revenue	--	--	--	Less than \$1 billion	--	Between \$1 and \$2 billion	Over \$2 billion
Participant/Observer	Either	Either	Either	Either	Observer	Either	Either
Annual dues (2026)	\$0	\$2,500	\$5,000	\$10,000	\$10,000	\$20,000	\$30,000
Annual dues (2027)	\$0	\$3,500	\$7,500	\$12,500	\$12,500	\$25,000	\$40,000

Impact Timeline & Next Steps

- After verifying your company size, companies and trade associations will receive their **invoices the second week in November**.
- **Invoices will be due at the end of Q1 2025** to allow for flexible payment.
- If you are an NGO or labor union, no action on your part is required to be an Impact member.
- **Impact will officially launch in January 2026**, and house Coalition advocacy activities, including the legislative Work Group and the Capitol Hill Day.
- The Advisory Council will have it's first meeting in **January 2026** (Date TBD).



Discussion

Thank You!

Coalition Structure Evolving in 2026

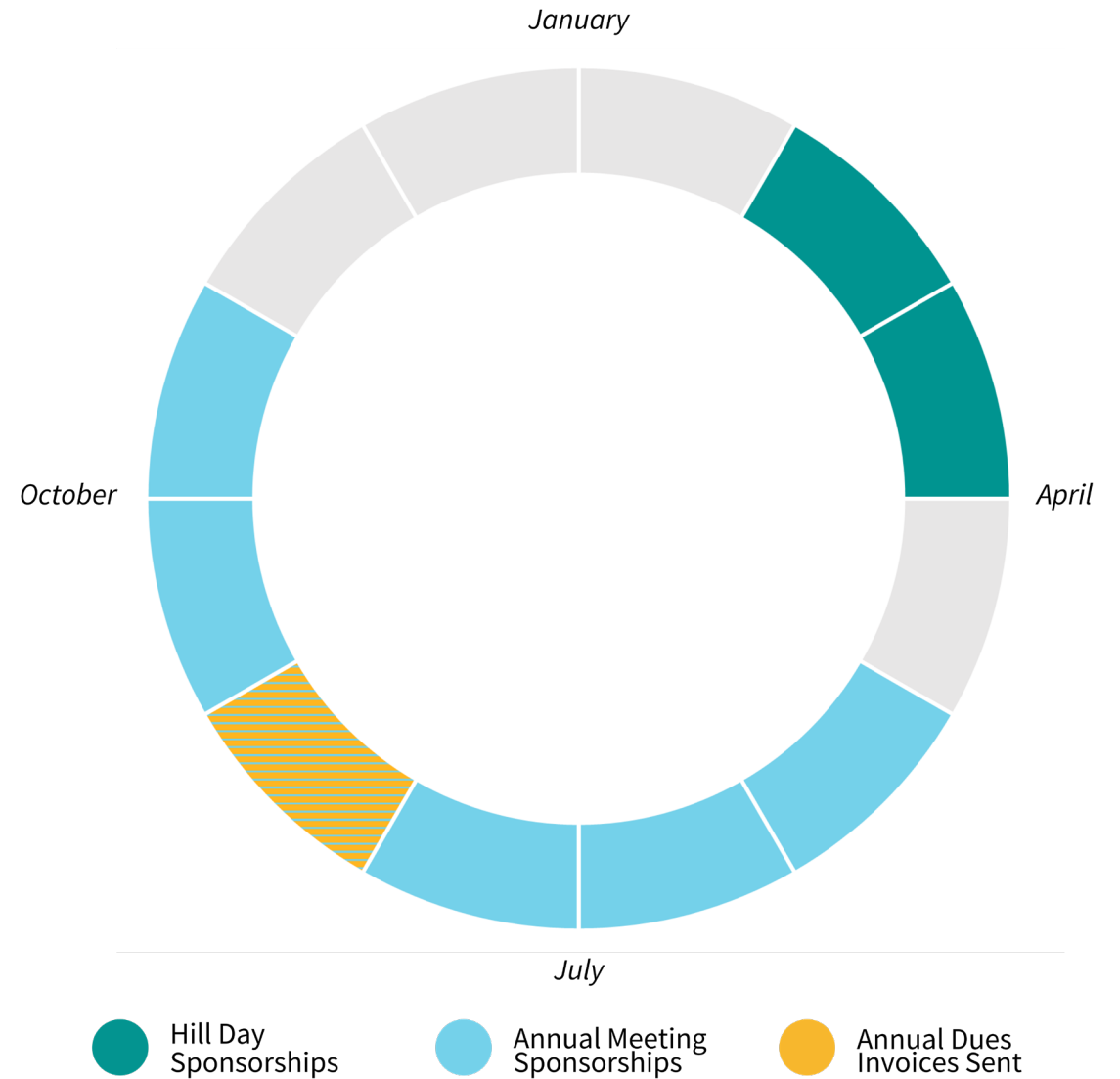


**CARBON CAPTURE
COALITION**

Coalition & Impact Budget Calendar

There are three main points in the year for member support:

- **Hill Day Event Sponsorships**
(Q1)
- **Annual Meeting Sponsorships**
(Q3)
- **Annual Dues**
(Q3 -- invoices sent
Q1 – payment on invoices due)



Coalition & Impact Staff and Boards

COALITION & IMPACT STAFF

- Jessie Stolark, Executive Director
- Madelyn Morrison, Director of Gov't Affairs
- Christian Flinn, Manager of Public Policy
- Sangeet Nepal, Technology Specialist
- Leo Duke, Communications & Member Relations Specialist

COALITION GOVERNANCE BOARD

- Barbara McBride, Calpine
- Andrew Fishbein, Climeworks
- Laura Brannen, Nature Conservancy
- Xan Fishman, Bipartisan Policy Center
- Jeremy Moddrell, United Association
- Jessie Stolark, Coalition Executive Director, *ex officio member*

IMPACT BOARD OF DIRECTORS

- Andrew Fishbein, Climeworks
- Xan Fishman, Bipartisan Policy Center
- Jeremy Moddrell, United Association
- Jessie Stolark, Impact Executive Director, *ex officio member*